

**SPHERO™ Rainbow Calibration Particles for EuroFlow™ Standardization Guidelines**

Rainbow Calibration Particles, 8 peaks Cat. No. RCP-30-5A (EuroFlow) are used in EuroFlow™ standardization protocols for the initial characterization, to set target MFI values, and for daily performance tracking of the flow cytometers.

**SPHERO™ Rainbow Calibration Particles, EuroFlow™**

Particle Type and Surface	Size, µm	Catalog No.	Unit
Rainbow Calibration, 8 peaks, 10 <sup>7</sup> /mL	3.0-3.4	RCP-30-5A (EuroFlow)	5 mL

- RCP-30-5A (EuroFlow) provide target mean fluorescence intensities (MFI) to aid in the full standardization in 8-color flow cytometric immunophenotyping panel of normal and malignant leukocytes in bone marrow and blood.

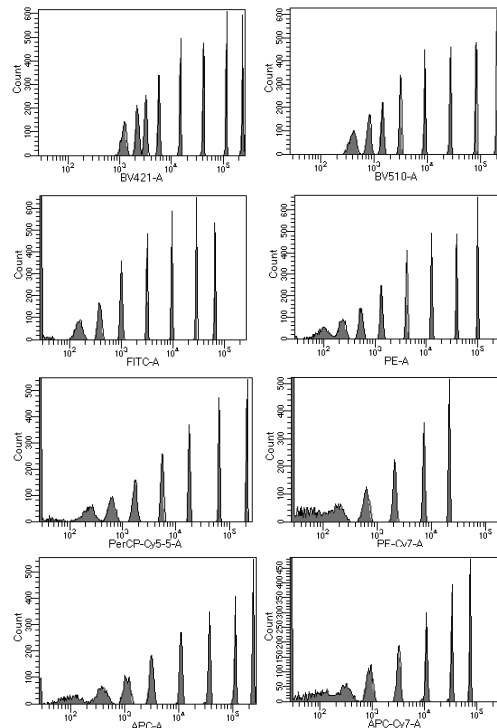
Selected Reference:

Kalina T, Flores-Montero J, van der Velden VHJ, et al. EuroFlow standardization of flow cytometer instrument settings and immunophenotyping protocols. *Leukemia*. 2012;26(9):1986-2010. doi:10.1038/leu.2012.122.

The detailed EuroFlow SOP for instrument setup is available at the EuroFlow website ([www.euroflow.org](http://www.euroflow.org)).

*FACSCanto™ Fluorescence Intensity Target Values for RCP-30-5A-7 (Peak 7)*

Channel	Lower MFI (-15%)	Target Value	Upper MFI (+15%)
Pacific Blue	90,855	106,888	122,922
Pacific Orange	72,500	85,294	98,088
FITC	23,292	27,402	31,513
PE	32,666	38,430	44,195
PerCP-Cy5.5	57,874	68,087	78,301
PE-Cy7	6,774	7,969	9,165
APC	95,180	111,976	128,773
APC-H7	28,594	33,641	38,687



*Histogram of RCP-30-5A (EuroFlow) from a BD Bioscience FACSCanto™ II at peak 7 MFI target values*

*Molecules of Equivalent Fluorochrome (MEF) for RCP-30-5A (EuroFlow™)*

Peak #	MEFL	MEPE	MEPTR	MECY	MEAP
1	N/A	N/A	N/A	N/A	N/A
2	789	443	187	1,137	736
3	1,896	1,245	543	3,041	1,892
4	4,872	3,415	1,536	7,960	4,804
5	15,619	11,299	5,423	25,995	14,248
6	47,116	35,875	17,825	82,663	42,425
7	143,912	112,460	63,989	294,040	113,026
8	333,068	287,758	207,649	973,175	227,044

Pacific Blue™ and Pacific Orange™ is a trademark of Life Technologies.

Cy™ is a trademark of GE Healthcare.

EuroFlow™ is a trademark of European Scientific foundation for Laboratory Hemato Oncology (ESLHO).

Flow Cytometry  
EuroFlow™ Standardization